



By Charles Butler

COMPREHENSIVE DATA PROTECTION WITH SYMANTEC BACKUP EXEC 12

Symantec® Backup Exec™ software is designed to provide simplified, comprehensive backup and recovery for Microsoft® Windows® environments. The new Symantec Backup Exec 12 introduces multiple enhancements, including enhanced granular recovery and continuous protection, comprehensive support for the Microsoft Windows Server® 2008 OS, and innovative integration with other Symantec products.

Symantec Backup Exec 12 is designed to provide efficient, easy-to-manage backup and recovery protection from servers to desktops and notebooks, offering market-leading data protection for environments based on Microsoft Windows operating systems. With granular recovery features and continuous data protection for critical Microsoft applications, Backup Exec 12 helps ensure that critical data is efficiently protected and can be quickly recovered, down to individual e-mail messages, folders, and documents. And its high-powered remote agents help provide scalable data protection even for servers not running Microsoft operating systems.

In addition to offering simplified, comprehensive backup and recovery for Windows environments, Symantec Backup Exec 12 includes enhanced granular recovery and continuous protection features, comprehensive support for the Windows Server 2008 OS, innovative integration with other Symantec products, and other features such as an enhanced Agent for Windows Systems, enhanced support for Linear Tape-Open (LTO) tape drives, and an integrated trial of agents and options at no additional cost.

SIMPLIFIED, COMPREHENSIVE BACKUP AND RECOVERY

By offering a comprehensive data protection and recovery solution in a single product suite, Backup Exec 12

helps reduce the complexity of dealing with the backup and recovery of a critical asset for most enterprises—their data. Whether that data resides on a Windows-based file server, a desktop or notebook, or a critical Microsoft Exchange, Microsoft SQL Server®, or Microsoft Office SharePoint® Server application server, Backup Exec 12 can offer comprehensive protection and recovery for both data and systems.

To help meet growing enterprise needs, Backup Exec 12 provides traditional tape-based as well as disk-based continuous data protection—helping eliminate backup windows, accelerate data recovery, and enable end users to recover their own files without IT staff intervention. Administrators can use Backup Exec 12 to quickly recover data, including critical information such as individual e-mail messages, folders, and documents, from a single backup. An optional centralized administration console provides scalable management of distributed backup and remote servers. And in addition to sophisticated database and groupware agents that help provide granular recovery and online protection, Backup Exec 12 also includes entry-level system recovery and open file protection.

Other key features of Backup Exec 12 also help simplify backup and recovery tasks. For example, administrators can use the enhanced user interface and calendar view to quickly track and monitor backup and recovery jobs. Backup Exec 12 also

Related Categories:

Symantec

Systems management

Visit DELL.COM/PowerSolutions
for the complete category index.

provides the Pre-Install Environment Checker, which highlights potential problems before the software is installed. The Job Test Run feature enables Backup Exec 12 to identify potential problems that cause job failures and then notify administrators so that they can take appropriate corrective action. The automatic discovery of new resources enables administrators to create a job for detecting new, unprotected resources that may be at risk and in need of backup. These tools help reduce the time and resources needed to install and run Backup Exec, while helping improve overall data protection.

ENHANCED GRANULAR RECOVERY AND CONTINUOUS PROTECTION

Symantec Backup Exec 12 incorporates patent-pending Granular Recovery Technology (GRT) for critical Microsoft applications, including Exchange, Active Directory®, SharePoint Server, and Windows SharePoint Services software—enabling organizations to recover granular data quickly and efficiently from a single-pass backup (see Figure 1). This innovative technology helps eliminate the need to run Exchange mailbox backups to recover granular data, and allows rapid, simple recovery of Active Directory, SharePoint Server, and SharePoint Services data, including documents, user attributes, and properties. End users can simply browse, select, and restore individual items in the database without requiring IT staff intervention. In Backup Exec 12, not only are mailbox or Messaging Application Programming Interface (MAPI) backups not required for granular recovery, but administrators can now easily store GRT-enabled backups on a remote or removable disk or on a storage area network to help further optimize their backup and recovery strategy.

Backup Exec also provides continuous data protection, which complements GRT by helping provide fast, reliable disk-based data protection that continuously backs up transaction logs and assigns

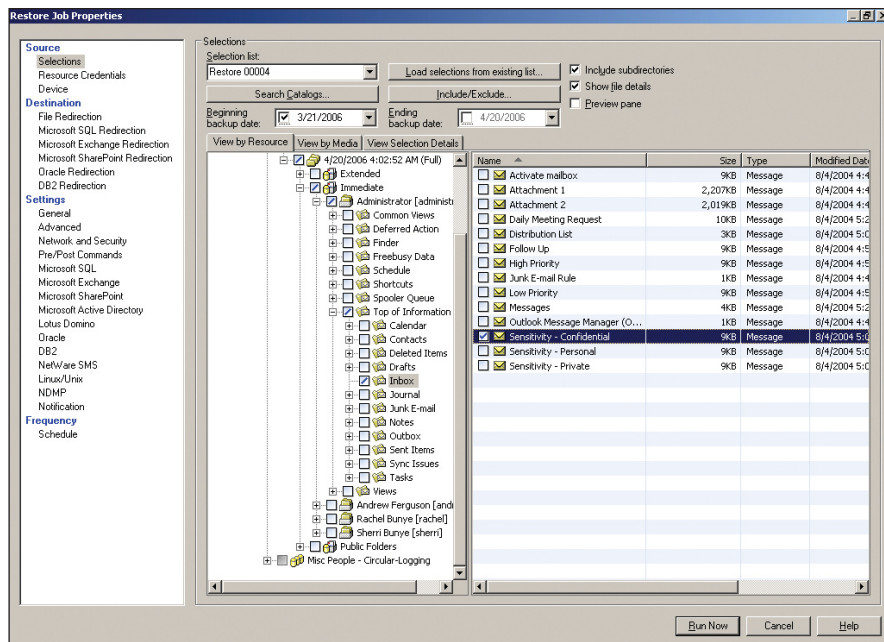


Figure 1. Granular Recovery Technology in Symantec Backup Exec 12

user-designated recovery points to help eliminate the daily backup window. In addition, each recovery point can be easily opened and browsed for rapid restoration of a specific document or e-mail. Continuous data protection provides protection for Windows-based file servers, Exchange servers, and SQL Server servers, desktops, and notebooks. And, with Symantec Backup Exec Retrieve for file servers, end users can quickly retrieve their own files—without IT staff intervention.

SUPPORT FOR MICROSOFT WINDOWS SERVER 2008

Symantec Backup Exec has provided backup and recovery for environments running Microsoft operating systems and applications for over 15 years through a direct partnership between Symantec and Microsoft. Backup Exec 12 continues to do so by introducing comprehensive support for Microsoft Windows Server 2008.

Backup Exec 12 is Windows Server 2008 certified by Microsoft and takes advantage of capabilities and technologies introduced in Windows Server 2008 to provide comprehensive support for its components, including protection for Transactional NT File System (NTFS),

system state, and Active Directory; online protection for Microsoft Virtual Server virtual machines through Volume Shadow Copy Service (VSS); automated basic system recovery of Windows Server 2008 systems, including Microsoft BitLocker™ encrypted volumes; and comprehensive support for open files through VSS as well as clusters and cluster databases—all from a single data protection solution designed to protect entire Windows-based infrastructures from Windows 2000 through Windows Server 2008.

INTEGRATION WITH OTHER SYMANTEC PRODUCTS

Symantec Backup Exec 12 is designed to integrate with Symantec Endpoint Protection, Symantec Backup Exec System Recovery, Symantec Protection Network, and Symantec Enterprise Vault™ software to help simplify and enhance organizations' ability to secure, back up, and archive critical data. Integration with Symantec Endpoint Protection, for example, helps provide up-to-the-minute security warnings and proactive ThreatCon backup protection, while the enhanced Backup Exec System Recovery Option provides advanced disaster recovery protection,

including support for Windows Server 2008. Integration with Symantec Online Storage provided by Symantec Protection Network offers a secure, easy-to-manage option for off-site storage.

The new Symantec Backup Exec 12 Agent for Symantec Enterprise Vault software offers a comprehensive data protection package for critical Enterprise Vault installations (see Figure 2). The ability to automatically place Enterprise Vault databases and Vault Stores into backup mode, coupled with automatic detection of many aspects of the Enterprise Vault infrastructure to help complete database and file system backup, make this a sophisticated and straightforward single-agent approach to protection. Backup Exec 12 uses the capabilities and technologies of Enterprise Vault to provide comprehensive protection of Enterprise Vault infrastructures, including the following:

- Integration with Enterprise Vault to allow Backup Exec 12 to understand what parts of Enterprise Vault exist on each system where the agent is installed
- Implicit protection of Vault Store databases and associated partitions—when a Vault Store is selected for backup, the associated partitions are automatically selected as well, helping keep Vault Store databases and partitions in sync
- Automatic enabling of Enterprise Vault backup mode when backups start, and automatic disabling of backup mode when backups complete
- Comprehensive restore capabilities, from entire Vault Stores and partitions down to individual files or indexes

OTHER KEY ENHANCEMENTS

Symantec Backup Exec 12 also includes an enhanced Agent for Windows Systems, enhanced support for LTO tape drives, and an integrated trial of agents and options at no additional cost. The Agent for Windows Systems incorporates the Remote Agent for Windows Servers, continuous data protection, the Advanced

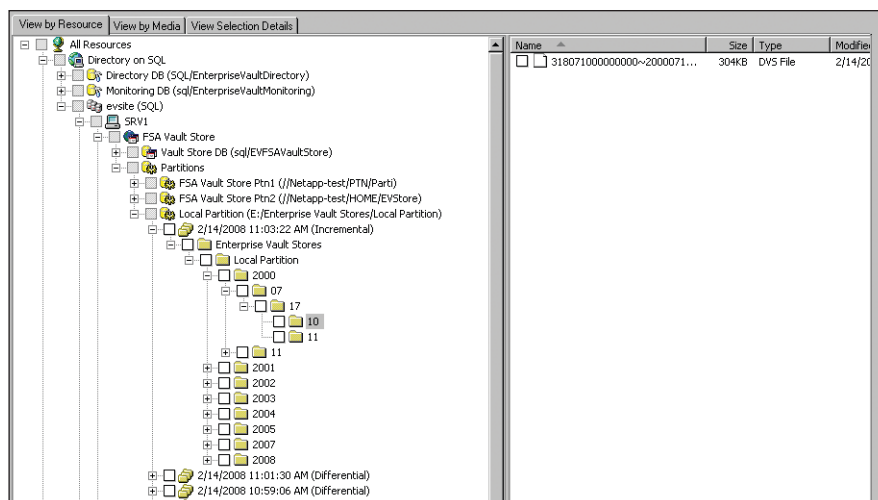


Figure 2. Symantec Backup Exec 12 integration with Symantec Enterprise Vault


Open File Option to help protect open files, and the Intelligent Disaster Recovery Option (now included with Backup Exec Media Server) for basic tape-based disaster recovery. The agent expands Windows-based data protection and helps optimize data transfers for 32- and 64-bit remote Windows-based servers, including local registry and system state information.

Backup Exec 12 also supports LTO-4 hardware encryption by managing the encryption keys through the tape drive, enabling data to be quickly decrypted and easily recovered to the Backup Exec media server. In addition, it supports high-speed block-size backups using LTO-3 and LTO-4 high-performance tape drives, helping reduce overall backup times.

Finally, administrators can use the Backup Exec 12 console to easily download and evaluate Backup Exec agents and options in their Backup Exec 12 environment for 60 days at no additional cost. Then, before the trial period expires, they can simply purchase and install the license keys for the agents or options they want to continue using—typically with no reinstallation or new configuration necessary.

COMPREHENSIVE DATA PROTECTION

The innovative architecture of Symantec Backup Exec, which incorporates Microsoft design standards and is Microsoft certified

for the Windows 2000 Server, Windows Server 2003, and Windows Server 2008 operating systems, is designed to provide comprehensive backup and recovery for Microsoft Windows environments. By providing key enhancements such as Granular Recovery Technology and continuous data protection, integration with other Symantec products, and the option to try out agents and options for 60 days at no additional cost, Backup Exec 12 offers a powerful, easy-to-manage way to protect critical enterprise data. 

Charles Butler is a principal product manager in the Data Protection Group at Symantec. He has a B.S. in Electrical and Computer Engineering from the University of Colorado at Boulder and an M.B.A. from St. Edward's University.

MORE

ONLINE

DELL.COM/PowerSolutions

QUICK LINKS

Symantec:
www.symantec.com

Symantec Backup Exec 12:
www.backupexec.com