



# POWER SOLUTIONS

May 2007

TRANSFORMING YOUR IT FRAMEWORK INTO A SCALABLE ENTERPRISE

## FEATURE SECTION: MICROSOFT EXCHANGE SERVER 2007

COVER STORY • page 10

### Access Everywhere. Business Anywhere.

#### How Microsoft Exchange Server 2007 Makes It Happen

By Jeanne Feldkamp, Deb McDonald, and Tom Kolnowski

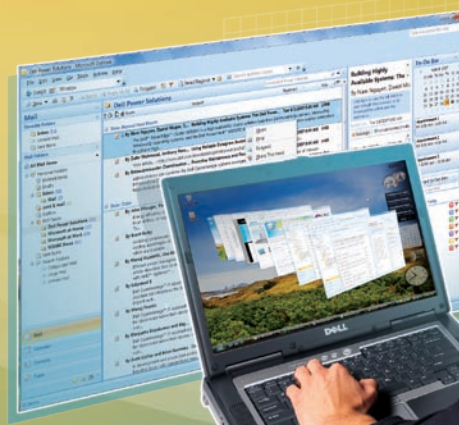
With intellectual capital flowing through messaging systems and an increasingly mobile workforce, enterprises face significant challenges surrounding data access, operational efficiency, security, and data protection. Microsoft Exchange Server 2007 addresses these concerns by providing a comprehensive, integrated, end-to-end messaging solution designed to reduce costs and complexity, enhance performance, and simplify compliance.

## The Business of IT • page 18

### Planning a Strategic Framework for Anywhere Data Access

By Chris Auger

As communication technologies converge in the workplace, IT decision makers must find new approaches to messaging infrastructure design, security, and compliance. By keeping the needs of highly mobile clients in mind during the Microsoft Exchange Server 2007 planning process, organizations can simplify operations, optimize solutions, and sustain value across the overall IT infrastructure.



## Dell PowerEdge High-Availability Clusters

To help protect access to business-critical applications, Dell cluster solutions are designed to eliminate single points of failure in a wide array of environments. Integrating Dell PowerEdge servers, Dell PowerVault and Dell/EMC storage, and other key components, Dell high-availability cluster configurations can scale flexibly and cost-effectively to meet the management and performance needs of any size enterprise, offering a host of benefits:

- **Manageability:** Centralize administration and resource management
- **Scalability:** Expand to address resource requirements throughout the enterprise
- **Consolidation:** Host multiple applications to maximize utilization
- **Customization:** Choose the industry-standard components and configurations that best suit your needs



## Now Playing: Dell Datacenter of the Future Podcast Series



How do companies like Dell manage their desktop environment and maintain standards? “Best Practices: Systems Management with SMS” explores how enterprises can use Microsoft Systems Management Server to inventory hardware and software, distribute software updates and patches, and meter use—all using an open API. For more information, visit [www.dell.com/podcast](http://www.dell.com/podcast).

## EDITOR’S COMMENTS

### 8 **Brave New Worlds**

*By Tom Kolnowski*

## FEATURE SECTION: MICROSOFT EXCHANGE SERVER 2007

### 22 **Understanding the Architecture and Features of Microsoft Exchange Server 2007**

*By Ananda Sankaran and Suman Kumar Singh*

To effectively prepare for migrations to Exchange Server 2007, administrators should understand key technical changes from Exchange Server 2003—including differences in core architecture, mailbox data access, and secure deployment features.

### 26 **A Blueprint for Implementing Microsoft Exchange Server 2007 Storage Infrastructures**

*By Derrick Baxter and Suresh Jasrasaria*

EMC has created an integrated, cost-effective blueprint for consolidated Exchange Server 2007 storage infrastructures that can deliver high availability and performance while scaling effectively for future growth.

### 31 **Design Considerations for Deploying Microsoft Exchange Server 2007**

*By Suman Kumar Singh and Bharath Vasudevan*

The Dell Exchange 2007 Advisor online tool helps reduce the complexity of Exchange Server 2007 deployments for enterprises of all sizes by recommending configurations based on specific goals and requirements.

### 34 **Protecting Critical Enterprise Applications with Symantec Backup Exec 11d**

*By Charles Butler*

Symantec Backup Exec 11d for Windows Servers introduces significant backup and recovery capabilities for Microsoft Exchange environments, including Granular Recovery Technology and Continuous Protection Server.

### 38 **Advancing Microsoft Exchange Server 2007 with 64-bit AMD Opteron Processors**

Energy-efficient AMD Opteron processors can accelerate Exchange Server 2007 performance while minimizing power consumption to help keep operating costs low.

# SEE IT HERE FIRST ►



## Exploring the Dell PowerVault MD3000 Storage System

*By Manjusha Gopakumar, Vishal Kadam, and Paul Winston*

The Dell PowerVault MD3000 allows multiple servers to access a shared pool of expandable storage, helping avoid the costs and complexities of Fibre Channel or Ethernet storage infrastructures.



## Integrating Dell Remote Console Switches with Microsoft Active Directory

*By Rayan Ghosal*

The multiuser Dell 2161DS-2 and 4161DS remote console switches are designed to authorize and authenticate Active Directory users for switch access.



## Installing Dell OpenManage Server Administrator on Linux Platforms

*By O. R. Senthil Kumaran and Rajkumar V. J.*

Administrators can choose from an array of local and remote deployment methods when installing Dell OpenManage Server Administrator 5.2 on supported Linux operating systems.



## Advanced Configuration for the Dell PowerConnect 5316M Blade Server Chassis Switch

*By Surendra Bhat and Saurabh Mallik*

Enterprises can take advantage of advanced configuration options for the Dell PowerConnect 5316M Gigabit Ethernet switch to help optimize network access for blade servers.



## Using Dell OpenManage IT Assistant for Effective Systems Management

*By Maheswary Ramakrishnan and Rammya Krishnamurthy*

Following best practices can help administrators efficiently utilize Dell OpenManage IT Assistant for simple, effective remote systems management.



## Seamless Updates Using Dell OpenManage Server Update Utility 1.5

*By Gagan Shrestha, Deepak Panambur, and Panna Hegde*

Dell OpenManage Server Update Utility 1.5 includes several enhanced features designed to increase flexibility and simplify hardware and software updates for Dell PowerEdge servers.



## Discovering Dell/EMC Storage Devices with Dell OpenManage IT Assistant 8.0

*By Eranna Talur and Maheswary Ramakrishnan*

Dell OpenManage IT Assistant 8.0 helps administrators discover, inventory, monitor, and manage Dell/EMC storage devices.



## Simplifying OS Deployment with the Dell OpenManage Server Assistant Driver Extraction Utility

*By Pritesh Prabhu and Joseph Razo*

The Dell OpenManage Server Assistant Driver Extraction Utility enables administrators to easily integrate drivers for Dell PowerEdge servers into custom OS deployment processes.



## Your Information, Your Way

The *Dell Power Solutions* articles on this page are available exclusively online at [www.dell.com/powersolutions](http://www.dell.com/powersolutions). Plus: Check the *Dell Power Solutions* Web site for our early-release articles, how-to's, implementation studies, and expert tips you won't find anywhere else.

Need specific subject matter at your fingertips? Search our **Related Categories** index and then visit full-text articles from current and back issues online. Can't wait? For real-time access to content as soon as it's posted, subscribe your favorite RSS (really simple syndication) reader to the feed at the *Dell Power Solutions* Web site or [www.dell.com/rss](http://www.dell.com/rss).



## DEPARTMENTS

### DELL ENTERPRISE TECHNOLOGY CENTER SERIES

- 42 **Comparing Virtualization Performance: Dell PowerEdge and HP ProLiant Servers**  
*By Todd Muirhead; Dave Jaffe, Ph.D.; and Terry Schroeder*
- 50 **Implementation Study: Dell IT Scales Supply Chain Management with Oracle RAC 10g**  
*By Dave Jaffe, Ph.D.; Todd Muirhead; Tiong Tey; and Raveendra Avutu*
- 54 **Monitoring Dell PowerEdge Servers with Oracle Enterprise Manager 10g Grid Control**  
*By Dave Jaffe, Ph.D.*

### POWERING AND COOLING THE DATA CENTER

- 62 **Understanding the Challenges of Delivering Cost-Effective, High-Efficiency Power Supplies**  
*By Stuart Berke, David Moss, and Randy Randall*

## SCALABLE ENTERPRISE SERVICES SHOWCASE • page 40



## Unlocking the Potential of Microsoft Exchange Server 2007

With turnkey solutions and proven expertise, the Dell Services team helps ease migration to Microsoft Exchange Server 2007—enabling businesses to gain a competitive edge by taking advantage of new features like Unified Messaging from data center to desktop and beyond.

### STORAGE

- 66 **iSCSI: Changing the Economics of Storage Part 1—Understanding iSCSI in Enterprise Environments**  
*By Travis Vigil*
- 70 **Building Highly Available Systems: The Dell PowerEdge Cluster SE600W and PowerVault MD3000**  
*By Nam Nguyen, Daniel Moges, Shabana M., and Travis Vigil*

### DATABASES: ORACLE

- 74 **Using Reliable Datagram Sockets Over InfiniBand for Oracle Database 10g Clusters**  
*By Zafar Mahmood, Anthony Fernandez, and Gunnar K. Gunnarsson*
- 80 **Deploying Dell PowerVault MD3000 Storage in Oracle Database 10g Cluster Environments**  
*By Mahmoud Ahmadian and Chethan Kumar*
- 84 **Using Oracle Streams Advanced Queuing in Application Messaging Infrastructures**  
*By Ramkumar Rajagopal and Mahmoud Ahmadian*

### NETWORK SOLUTIONS SHOWCASE

- 89 **Intel I/O Acceleration Technology Helps Eliminate Network Bottlenecks**

### VIRTUALIZATION

- 90 **Proactive Maintenance and Power Management with Dell OpenManage and VMware Virtualization**  
*By Balasubramanian Chandrasekaran and Puneet Dhawan*
- 94 **How to Jump-Start the Migration to Microsoft Windows Vista**  
*By Chris Harget*

### INDUSTRY SOLUTIONS

- 96 **Presenting Dell Digital Cinema: Coming Soon to a Theater Near You**  
*By Franklin Flint*

### ENTERPRISE RESOURCE PLANNING: SAP

- 99 **Benchmarking SAP Customer Relationship Management Software on Dell PowerEdge Servers**  
*By Morten Loderup*



## ENTERPRISE DIRECTORY SERVICES: IMPLEMENTATION STUDY

### 102 **How Dell Streamlined Authentication and Identity Management Using Quest's Vintela Authentication Services**

*By Dave Wilson and Rommel Mercado*

## SYSTEMS MANAGEMENT

### 105 **Dell OpenManage Newsletter: Simplifying IT Management**

*By Edward Reynolds and David Weber*

### 108 **Disabling Local Video Consoles in Ninth-Generation Dell PowerEdge Servers**

*By Abhay Salunke, Kalyani Khobragade, and Thirumalaa Srinivas*

## PRODUCT SHOWCASE

### 110 **ATI FireGL Accelerators from AMD Deliver the Graphics Power on Dell Precision Workstations**

## DELL ENTERPRISE SOFTWARE UPDATES

### 112 **Maintaining Dell Platforms with Dell Technical Updates**

## SPECIAL SECTION: NETWORK SOLUTIONS

### 113 **By Challenging Traditional Thinking, Intel Accelerates I/O with New Platform Technology**

*By Indumathi Madhavan*

## ADVERTISER INDEX

Advanced Micro Devices, Inc. ....	5, 45
Avocent Corporation ....	57
Broadcom Corporation ....	21
Dell Inc. ....	107
Dell Power Solutions ....	73
EMC Corporation ....	49
Enterasys Networks, Inc. ....	17
Intel Corporation ....	C2, 109
Microsoft Corporation ....	C3
Multiling Corporation ....	65
Oracle Corporation ....	C4
Sanmina-SCI Corporation ....	7
Symantec Corporation ....	9
Trend Micro Incorporated ....	33

## Editorial

**Editor-in-Chief and Publisher** • Tom Kolnowski

**Managing Editor** • Deb McDonald

**Features Editor** • Kathryn White

**Associate Managing Editor** • Liza Graffeo

**Senior Editor** • Jim Duncan

**Editorial Assistant** • Amy J. Parker

## Art

**Art Director and Cover Designer** • David Chan

**Designer and Illustrator** • Cynthia Webb

## Contributors

**Authors** • Mahmoud Ahmadian; Chris Auger; Raveendra Avutu; Romy Bauer; Derrick Baxter; Stuart Berke; Surendra Bhat; Charles Butler; Balasubramanian Chandrasekaran; Sarah Close; Puneet Dhawan; Jim Duncan; Jeanne Feldkamp; Anthony Fernandez; Franklin Flint; Rayan Ghosal; Manjusha Gopakumar; Liza Graffeo; Gunnar K. Gunnarsson; Chris Harget; Panna Hegde; Dave Jaffe, Ph.D.; Suresh Jasrasaria; Vishal Kadam; Kalyani Khobragade; Tom Kolnowski; Rammya Krishnamurthy; Chethan Kumar; Mike Langberg; Morten Loderup; Shabana M.; Indumathi Madhavan; Zafar Mahmood; Saurabh Mallik; Deb McDonald; Rommel Mercado; Daniel Moges; David Moss; Todd Muirhead; Nam Nguyen; Deepak Panambur; Pritesh Prabhu; Ramkumar Rajagopal; Maheswari Ramakrishnan; Randy Randall; Joseph Razo; Edward Reynolds; Abhay Salunke; Ananda Sankaran; Terry Schroeder; O. R. Senthil Kumaran; Gagan Shrestha; Suman Kumar Singh; Thirumalaa Srinivas; Eranna Talur; Tiong Tey; Rajkumar V. J.; Bharath Vasudevan; Ben Vigil; Travis Vigil; David Weber; Dave Wilson; and Paul Winston

**Dell Global Brand Photographic Services** • Tony Bolding, Bryan Kuntz, Adran Matte, and Joey Pena

**Artist** • Mark Mastroianni

## Dell Power Solutions Online

**Web Design** • Joi Chevalier

## Marketing

**Special Inserts Manager** • Kristin Kreisel

## Subscriptions

Subscriptions are complimentary to qualified readers who complete the online subscription form. To sign up as a new subscriber, renew an existing subscription, change your address, or cancel your subscription, access the online Subscription Center forms at [www.dell.com/powersolutions](http://www.dell.com/powersolutions). For other subscription services, please e-mail [us\\_power\\_solutions@dell.com](mailto:us_power_solutions@dell.com).

## About Dell

Dell Inc., headquartered in Round Rock, Texas, near Austin, listens to customers and delivers innovative technology and services they trust and value. Uniquely enabled by its direct business model, Dell sells more systems globally than any other computer company, placing it 25th on the Fortune 500 list. For more information, visit our Web site at [www.dell.com](http://www.dell.com).

Dell cannot be responsible for errors in typography or photography. Dell, the Dell logo, Dell OpenManage, Dell Precision, Latitude, OptiPlex, PowerConnect, PowerEdge, PowerVault, and UltraSharp are trademarks of Dell Inc. Other trademarks and trade names may be used in this publication to refer to either the entities claiming the marks and names or their products. Dell disclaims any proprietary interest in the marks and names of others.

*Dell Power Solutions* is published in February, May, August, and November by Dell Inc., *Dell Power Solutions*, One Dell Way, Mail Stop RR5-03, Round Rock, TX 78682, U.S.A. No part of this publication may be reprinted or otherwise reproduced without permission from the editor-in-chief. Dell does not provide any warranty as to the accuracy of any information provided through *Dell Power Solutions*. Opinions expressed in this magazine may not be those of Dell. The information in this publication is subject to change without notice. Any reliance by the end user on the information contained herein is at the end user's risk. Dell will not be liable for information in any way, including but not limited to its accuracy or completeness. Dell does not accept responsibility for the advertising content of the magazine or for any claims, actions, or losses arising therefrom. Goods, services, and/or advertisements within this publication other than those of Dell are not endorsed by or in any way connected with Dell Inc.

Copyright © 2007 Dell Inc. All rights reserved. Printed in the U.S.A.

♻️ Printed on recycled paper containing 10 percent post-consumer waste.

May 2007

## TALK BACK

We welcome your questions, comments, and suggestions. Please send your feedback to the *Dell Power Solutions* editorial team at [us\\_power\\_solutions@dell.com](mailto:us_power_solutions@dell.com).